

Chief Nursing Executive Role in Hospitals



Thunder Bay Regional Health Sciences Centre

**Dr. Rhonda Crocker Ellacott, V.P. & CNE
Presentation to Board of Directors – February 2, 2011**

Outline

- What is the CNE Role?
- Overview of the Role
- What are the key roles, responsibilities and accountabilities of the CNE?
- Organizational Structure
- Recent Legislative Changes

CNE Role

What is the CNE?

- Chief Nursing Executive (CNE) is defined in the Public Hospitals Act – Regulation 965 - as “the senior nurse employed by the hospital who reports directly to the administrator and is responsible for nursing services provided in a hospital”
- Changes to Reg. 965 and ECFAA have identified new requirements for CNE

KEY COMPONENTS OF CNE ROLE

- ✓ Senior Leadership position designed to oversee the quality of nursing care delivered at TBRHSC
- ✓ To oversee nursing regulation
- ✓ To create a vision for nursing practice and patient care

What Does This Mean?

- Develop and promote common nursing care service standards
- Line role with accountability, authority, responsibility for nursing practice across the entire organization
- Responsible for setting standards for Nursing Leadership, Nursing Clinical Practice, Nursing Education and Nursing Research across all departments and services



Surgery

Medicine

ED / ICU

Cardiology

Maternal Child

Oncology

Mental Health

Nursing Leadership

- Implementation of a Nursing Plan
- MOHLTC Nursing Initiatives
- Collaborate with academic partners, regional hospitals, RNAO, CAHO/CNE to advance care strategy and care practices
- PFCC Model of Care
- Chair, NPT / Nursing Leadership
- Development of Nursing Vision, Philosophy and Strategy
- Nursing HHR Planning
- Nursing Clinical Resource Management

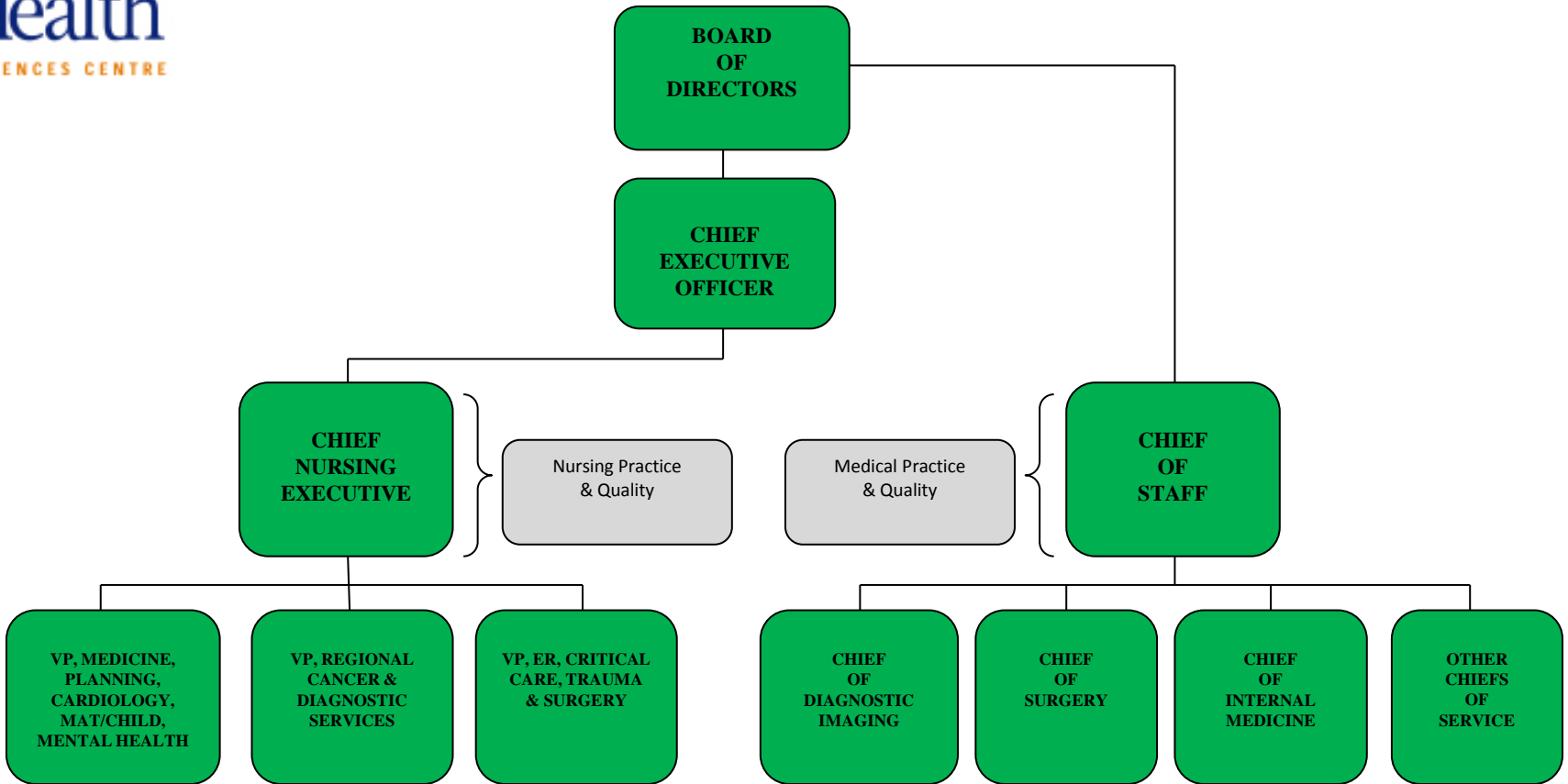
Nursing Clinical Practice

- Nursing Standards of Practice
- Added Nursing Skills
- Regulation
- Nursing Role / Scope of Practice (RN, RPN, APN)
- Nursing Best Practices
- Quality Work Setting
- Develops / Implements Nursing Model of Care Delivery
- Facilitates resolution to nursing practice issues
- Consults with Services related to Nursing Care / Practice
- Supports Professional Responsibility Complaint Process
- Development of Nursing Professional Practice Framework
- Liaison with regional and academic partners to lead nursing strategy and care practices

Education / Research

- Leadership and oversight to Nursing Academic Partnerships and Student placements for nursing
- Supports Evidence Based Nursing Practice in Education and Research
- Collaborative to facilitate Interprofessional Patient Family Centred Care
- Liaison with Regional Hospitals, Academic Centres to promote evidence based nursing practice
- Leading Nursing Practice Research, in collaboration with academic partners, to enhance nursing care/practice and administrative decision making

PROFESSIONAL PRACTICE / QUALITY ORGANIZATIONAL STRUCTURE





Caring Together

Major Changes Effective January 2011 ECFAA/ PHA

- CNE of the hospital will be a non-voting member of the Board
- CNE will develop plans (together with CEO, Medical Staff, Staff Nurses) to address ER situations of overcapacity disruptive to normal operations
- Bylaws provide for procedures for the appointment of a nurse as CNE of the hospital and the functions and responsibilities of such
- Participation of the CNE in hospital decision making related to administrative, financial, operations and planning matters
- CNE will be a member of the Quality of Care Committee

Legislative Requirements

- Responsibilities in a manner consistent with Public Hospitals Act, ECFAA, College of Nurses Standards of Practice & Guidelines, Nursing Act (1991)
- Collective Agreements: ONA / SEIU / Professional Responsibility / Other

QUESTIONS?

